

HyDrone RCV - Remote Controlled Vessel



Ted Read – Ohmex Ltd.

RCVs – Early Days

- The Grove (NPL)
- NMI 1985
- Hydrocat I & II
- Solent trials
- BMT Ceemaid



RCV surveys – Why ?

- Remote deployment
- Transportability
- Health & Safety
- Personnel costs
- Environmental concerns



HyDrone - Background



- Small river surveys
- Difficult launch sites
- Overhanging canopy
- Weed & debris
- Bridges & Structures
- Right of Access



RCV's – Negatives ?

- Too big and heavy **X**
- Too Fast **X**
- Unstable monohull **X**
- Expensive **X**
- Non - Modular **X**



Hydrone – Positives ?



1997



2005



2010

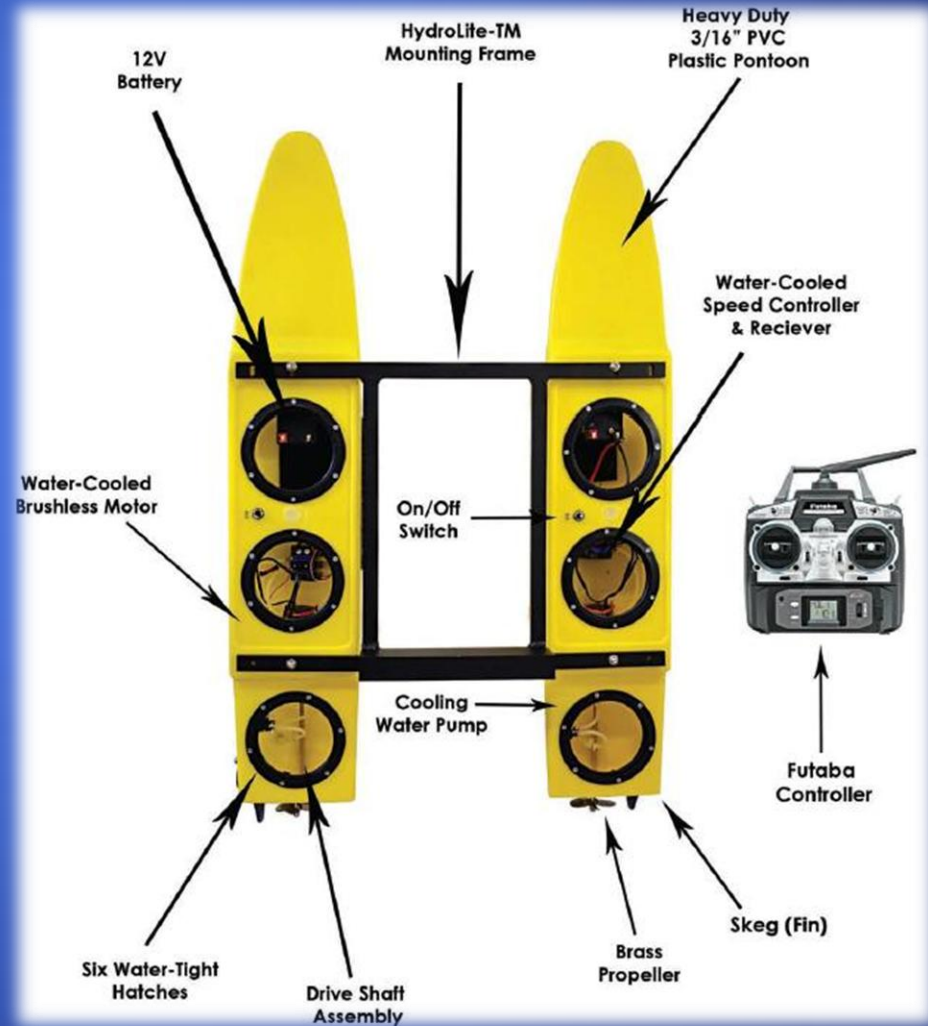


2014

- Stable multihull ✓
- KISS technology ✓
- Lightweight ✓
- Low cost ✓
- Flexible design ✓
- Towable ✓

HyDrone - Basic Design Concept ...

- Modular frame
- Independent Hulls
- ISM Radio Controlled
- Twin propellers
- Counter-rotation
- Flexible power
- Brushless motors
- Water cooled
- Easy access



HyDrone

Hydrographic use

- HydroLite platform
- SonarMite E/S
- RTK GPS
- Robotic Total Station
- Local/Remote data
- Long work cycle
- Easy battery swap



HyDrone

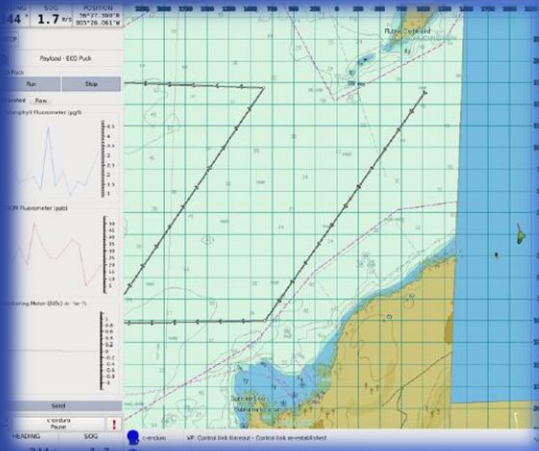
SonarMite Echo Sounder



- Bluetooth + Serial
- Low power DSP Process
- Rechargeable batteries
- < 6Kg total weight
- Integrated QA function
- 8 Hour operation
- 0.3 to 75m depths @ 2Hz
- 235 KHz frequency



HyDrone - Autonomous Operation



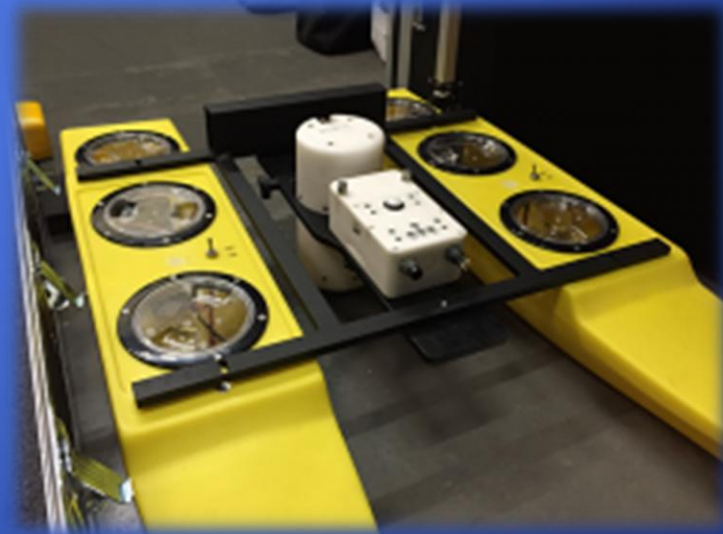
- Unseen obstacles X
- Floating Debris X
- Planning required X
- High skill overhead X
- Semi Autonomous ✓



HyDrone

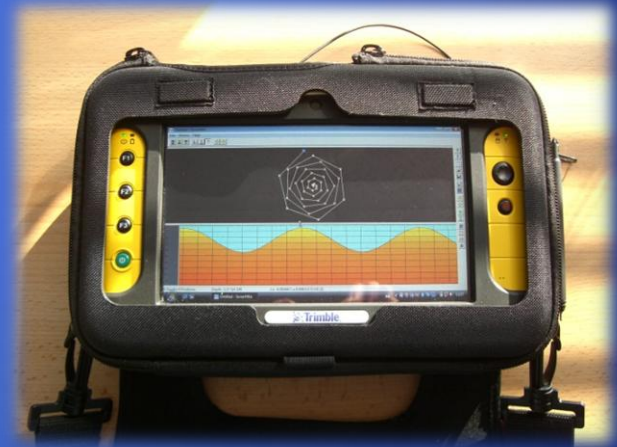
Stable platform

- <20Kg Payload
- SonarMite DFX
- ADCP flow meter
- O₂ Water Quality
- Geophysics



HyDrone – Software

- Xylem - Hypack
- QPS - Qinsy
- Ohmex - Tablet/PDA
- Trimble - Access, Hydropro
- Sitech – SCS900
- Leica – Viva, Captivate
- Topcon – Magnet, Topsurv
- Carlson - SurvCE



hydrographic and
marine software solutions

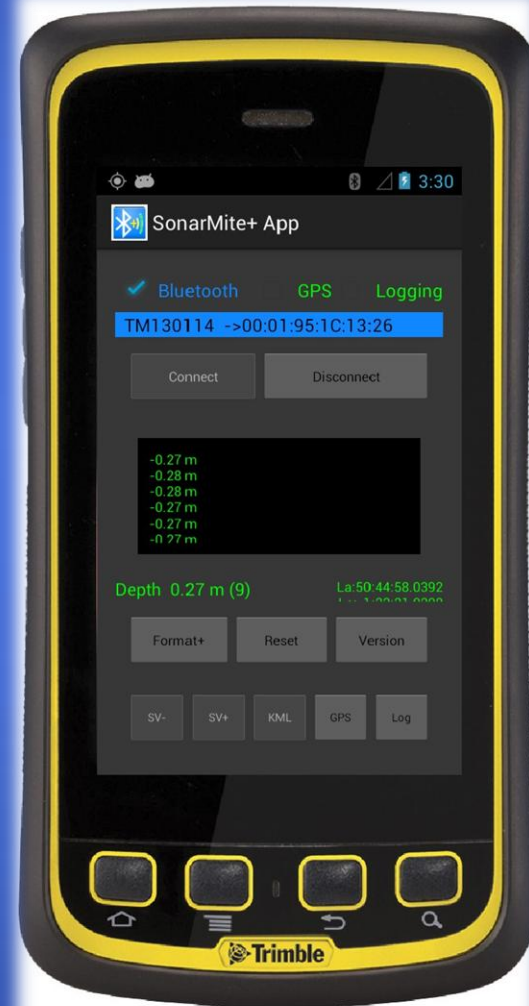


HYPACK
a xylem brand



OHMEX

HyDrone – Android BYOD



Further Information - Q&A ?



- www.seafloorsystems.com
- www.ohmex.com